



**Foellinger Outdoor
Theatre**

3411 Sherman Blvd.

Fort Wayne, IN 46808

<http://www.foellingertheatre.org>



Production Information

Table of Contents

Getting Started.....	3	Main Catering Room	13
General Information		Company Power	14
Facility Contacts	4	Stage Floor	14
Facility History	4	Stage Equipment	14
Facility Guidelines		Video Projection & Distribution System.....	15
General.....	5	Sound	
Fire/Pyro.....	5	Sound Inventory	15
Sound	5	Lighting and Electrics	
Rigging.....	5	Lighting Inventory/Electrics Overview	17
Vehicles	5	Lighting Standard Configuration.....	18
Staff Requirements.....	5	Followspots & Locations.....	18
Security.....	6	Rigging	
Merchandise Percentages & Sellers	6	Rigging System Overview.....	18
Client Responsibilities	6	Fly Loft Grid.....	19
Local Services		FOH Fly Truss	19
Local Equipment Rental and Dealers.....	7	Softgoods	19
Hotel Accommodations	8	Lineset Schedule	20
Catering Services	8	Appendix	
Maps, Parking, Transportation		Appendix A: Diagrams and Drawings.....	21
Directions and Parking	9	LIGHTING – Full Standard Purchase	
Loading Dock	10	Rep Plot.....	22
Transportation Services.....	10	LIGHTING – Stage.....	23
Dimensional Information	11	LIGHTING – Linesets/Catwalks	24
Cable Run Lengths	11	LIGHTING – Lighting Circuit Chart	25
Theatre Seating Capacity.....	12	LIGHTING – Instr. Schedule Catwalk ...	26
Theatre Related Facilities		LIGHTING – Instr. Schedule 1st	27
Production Office	13	LIGHTING – Instr. Schedule 2 nd	28
Dressing Rooms.....	13	LIGHTING – Instr. Schedule 3 rd	29
Private Lounge.....	13	LIGHTING – Instr. Schedule 4 th	30
On Deck Catering Room	13	LIGHTING – Instr. Schedule 5 th	31
Restrooms	13	RIGGING – Detailed Lineset Schedule .	32
Showers.....	13	FACILITY – Complete Facility Drawing.	33

TIMESAVER: If you're viewing this PDF on your computer or smartphone, all phone numbers, web addresses, addresses, section titles, and page numbers are clickable links.

Getting Started

This informational tech pack should provide you with all the information needed when considering Foellinger Theatre. As always, if you have any questions, you may contact our Theatre Manager, Rick Kinney at rick.kinney @ cityoffortwayne.org or for production related questions, Kirk McKinley at kirk.mckinley @ cityoffortwayne.org

All events in the Theatre that require lighting, and sound reinforcement, or other theatrical staff for any reason will require an “advance.” An advance is simply all of the planning and information you have for your event submitted to our Theatre Production Lead, accompanied by a discussion of your event and possible in-person meeting. The advance is necessary for us to determine staff requirements and make any preparations for your event before you arrive. The more we know before you arrive, the easier and smoother things will go on the day of your event. Most importantly, make sure you read through our “Facility Guidelines” section to get an idea of what we expect while you utilize our facility.

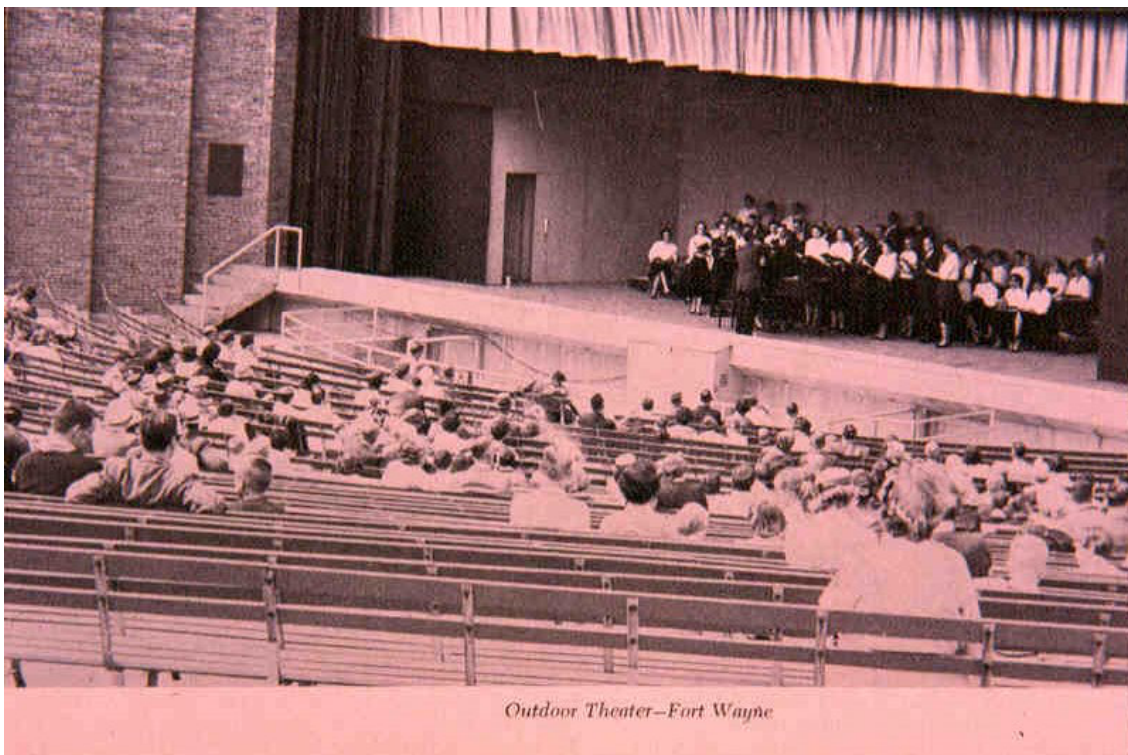
General Information

Facility Contacts

Name	Title/Department	Phone	E-Mail
Rick Kinney	Theatre Manager	260-427-6018	rick.kinney@cityoffortwayne.org

Facility History

The Foellinger Theatre in Franke Park was constructed in 1949 as a gift to the community from Helene Foellinger in memory of her father, Oscar G. Foellinger, former publisher of the Fort Wayne News Sentinel. The Theatre was to provide a unique type of entertainment space—an informal, open-air community gathering and performing area, molded into a grassy hillside in the park. For many years, the Foellinger Theatre provided a large performance stage in Fort Wayne, while most of the central city movie houses (former Vaudeville theatres) fell victim to the growing acceptance of television.



Outdoor Theater—Fort Wayne

A fire in the early 1970s provided an opportunity to make major improvements to the theatre and in 1976, the present open-sided dome and a new stage house were added through the generosity of the Foellinger Foundation. The theatre currently seats 2,751 fans. Recently over 50,000 people attended concerts, movies and other functions held yearly at the Theatre. Over sixty years after the curtains first opened,

Fort Wayne families are still enjoying the thrill of live performance under a starry summer sky. We think Miss Foellinger would be pleased.

<http://www.fortwayneparks.org/programs/adults/foellinger-theatre/about-foellinger-theatre.html>

Facility Guidelines

General

- No nails, tape, tacks, lags, stage screws, or similar articles shall be driven or placed in any part of the premises without the approval of the Theatre Production Lead.
- Estimates of technical charges, if needed, are available by contacting the Theatre Manager or Theatre Production Lead. This estimate will include stage labor and house equipment charges only.

Fire/Pyro

- Any use of pyrotechnics (effects) or open flame must be pre-approved by both the Theatre Production Lead, the Theatre Manager, and the Fire Marshal. This includes everything even simple candles. Advance planning and discussion are required.
- All scenery, props, stage dressing, costumes, and all other material must be flame proofed.

Sound

- The management reserves the right to control the final sound level and equalization for any show at the Foellinger Theatre.

Rigging

- No rigging or other equipment can be used or changed without the prior knowledge and approval of the Theatre Production Lead.

Vehicles

- No personal vehicles may be parked in the loading dock area.
- Cars, trucks, and vans must move to the parking lot after loading and unloading
- Commercial box trucks and tractor-trailers, in most cases, may stay in the loading dock bay for the duration of the event, but will need to be verified with the Theatre Production Lead before this happens.
- Vehicles and trailers may be left in the parking lot overnight, if necessary, with prior approval from the Theatre Production Lead. We are not responsible for damage or theft, but the parking lots are generally safe places.

Staff Requirements

The Foellinger Theatre employs an experienced, professional theatrical staff of engineers and stagehands.

- All events in Foellinger Theatre require a minimum of three supervisory staff members-Sound, Lighting, and Management.
- Other departments used, such as Rigging, Followspots, etc., each require additional labor.
- The Theatre Production Lead will determine, if necessary, additional staff required for load-in, setup, performance, and/or strike (tear-down).
- Theatre staff must be present to operate theatrical sound and lighting equipment.
- Use of our equipment by client-provided staff requires advance permission and discussion with the Theatre Production Lead.
- Our staff members are required to be present a minimum of ½ hour before client's arrival time until the end of any required restore after the event's conclusion.
- We maintain a strong relationship with IATSE Local 146 and associated locals when clients desire union stagehands.

Security

- Foellinger Theatre provides all uniformed security for a fee. Please discuss any security concerns with the Theatre Manager or Theatre Production Lead in advance.

Merchandising Percentages & Sellers

- Merchandise house percentages with or without house provided sellers:
 Recorded: 90/10
 Soft: 80/20
- A salesperson can be supplied if needed for an additional charge.

Leasee/Renter Responsibilities

- Complete contract and insurance form with Theatre Manager Rick Kinney. Insurance COI should be for \$2 million with City of Fort Wayne listed as additional insured.
- Contact the Theatre Production Lead to submit your requirements and layouts no less than one (1) month before your event.
- Confirm and update your requirements no later than two (2) weeks before your event. Crew schedules are prepared no later than two weeks in advance.
- Remove all equipment and properties from the facility after your event rental period. No equipment should be left behind or stored with us.
- Provide adult supervision for anyone under the age of 18 that is a party of your event.
- Please contact the Theatre Production Lead or Theatre Manager if you are running late.

Local Equipment Rental and Dealers

We can not recommend any specific vendor to you, but here are some that are familiar with our facility. You are encouraged to use your preferred vendor for rental and/or purchase of supplies and equipment. You may also talk to the Theatre Production Lead about having all your specs met inhouse.

Mid America Sound Corporation

6643 W. 400 N.

Indianapolis, IN 46140

Phone: 317-947-9980

Web: <http://www.midamericasound.com>

Services: audio, lighting, video panels, rigging, and repairs

CSD Live

3003 Ryan Road

New Haven, IN 46774

Phone: 260-918-3500

Web: <http://www.csdus.com>

Services: audio, lighting, and video panels

Sweetwater Sound

5501 US Hwy 30W

Fort Wayne, IN 46818

Phone: 260-432-8176

Web: <http://www.sweetwater.com>

Services: equipment and expendable purchasing

Ram Production Backline

2711 E 200 S

Bluffton, IN 46714

Phone: 260-824-0155

Web: <http://www.ramproductionbackline.com>

Services: backline rental

Jonas Productions

8606 N. 700 W.

Fountaintown, IN 46130

Phone: 317-835-7826

Web: <http://www.jonasproductions.com> **Services:**

backline and DJ equipment rental

Markey's Audio Visual

509 Ley Road

Fort Wayne, IN 46825

Phone: 260-483-0528

Web: <http://www.markeys.com>

Services: corporate audio, lighting, video screens, cameras, camera production, and rigging rental

Majestic Productions

305 North Main St.

Summitville, IN 46070

Phone: 765-536-9054

Web: <http://www.majesticproductions.com>

Services: lighting and rigging rental

Dodd Technologies

720 W. Pioneer Trace, Suite 200

Pendleton, IN 46064

Phone: 765-221-5011

Web: <http://www.doddtechnologies.com>

Services: audio, lighting, video, video screens, cameras, camera production, rigging and rigging services, multimedia, and set & scenic

Hotel Accommodations

Holiday Inn Purdue

4111 Paul Shaffer Drive

Fort Wayne, IN 46825

Phone: 260-482-3800

Web: <https://www.ihg.com/holidayinn/hotels/us/en/fort-wayne/fwayn/hoteldetail#>

Distance from Venue: 3.2 Miles

TownePlace Suites Fort Wayne North

3949 Ice Way Drive

Fort Wayne, IN 46805

Phone: 260-483-1160

Web: <https://www.marriott.com/hotels/fact-sheet/travel/fwats-towneplace-suites-fort-wayne-north/>

Distance from Venue: 1.2 Miles

Hilton at Grand Wayne Convention Center

1020 South Calhoun Street

Fort Wayne, IN 46802

Phone: 260-420-1100

Web: <https://www3.hilton.com/en/hotels/indiana/hilton-fort-wayne-at-the-grand-wayne-convention-center-FWAFHHF/index.html>

Distance from Venue: 2.7 Miles

Catering Services

Clients are required to use one of our preferred catering services when providing catering for any event. If you wish to use a different catering service, you must discuss your choice with the Theatre Manager in advance. A fee or deposit may be required.

Blue Spoon

6370 W. Jefferson Blvd.

Fort Wayne, IN 46804

Phone: 260-456-6563

Web: <http://thecatabluegrille.com>

Menu:

<http://thecatablugrille.com/bluspooncatering.html>

Email: catablue@aol.com

Old Crown Coffee Roasters

3417 N. Anthony Blvd.

Fort Wayne, IN 46805

Phone: 260-422-5282

Web: <https://www.oldcrown.com>

Menu: <https://www.oldcrown.com/dinner-menu/>

Goeglein's Catering

7311 Maysville Rd.

Fort Wayne, IN 46815

Phone: 260-719-5192

Web: <http://www.goegleins.com>

Menu: <http://www.goegleins.com/menus/default.aspx>

Email: catering@goegleins.com

Catering Fort Wayne

6338 E. State Blvd.

Fort Wayne, IN 46815

Phone: 260-417-7233

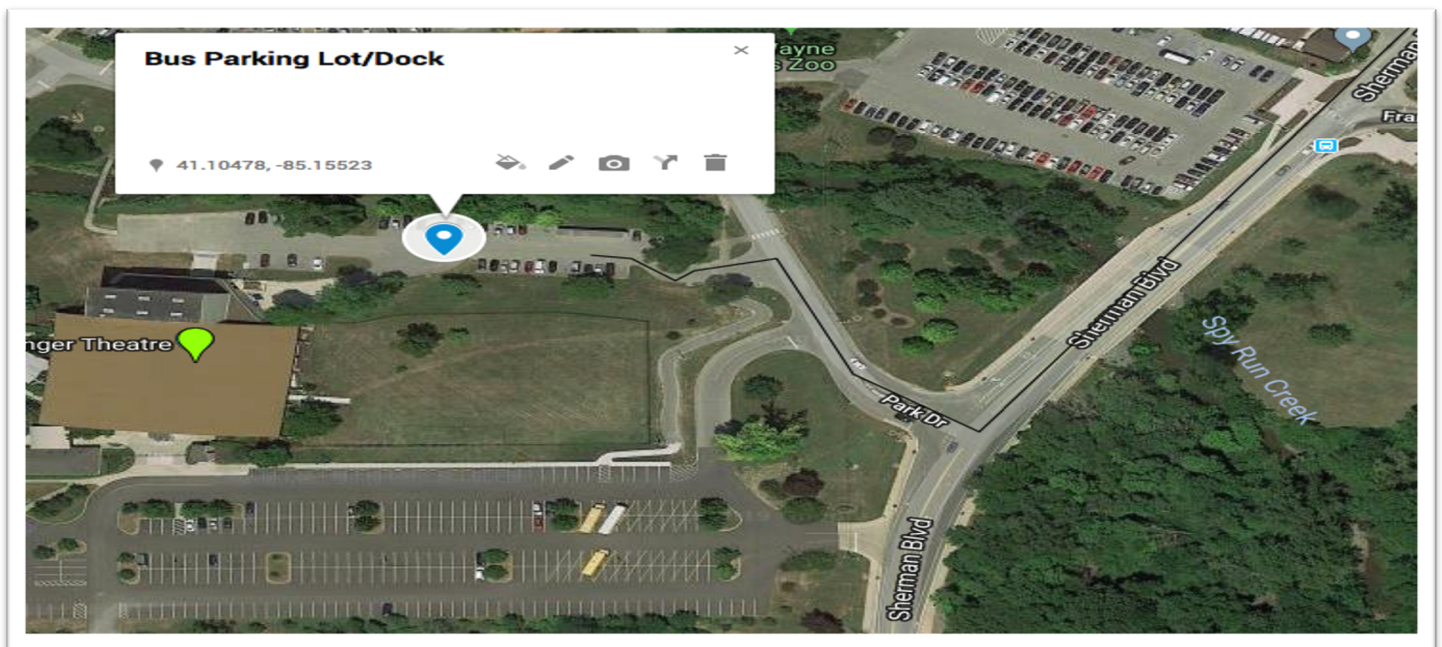
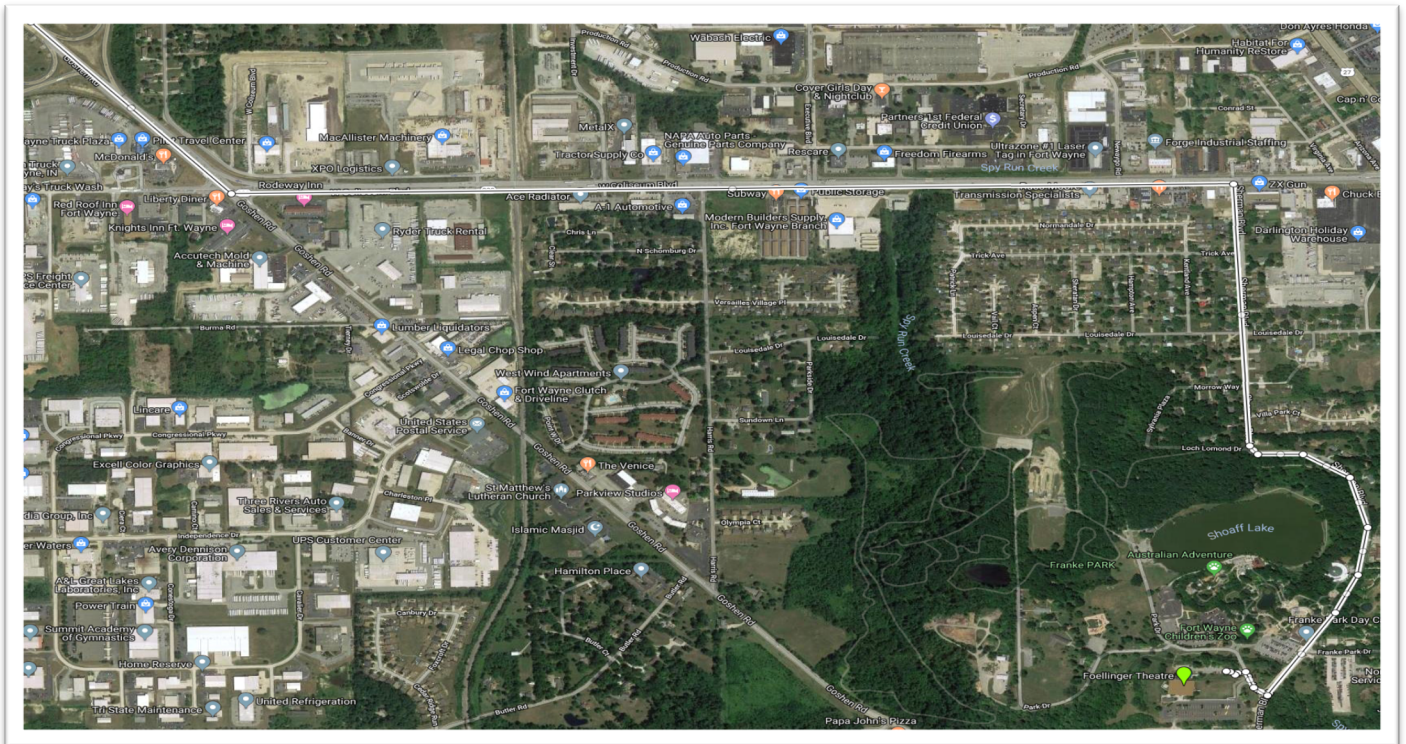
Web: <https://www.cateringfortwayne.com>

Menu: <https://www.cateringfortwayne.com/menus>

Email: cateringthefort@gmail.com

Directions and Parking

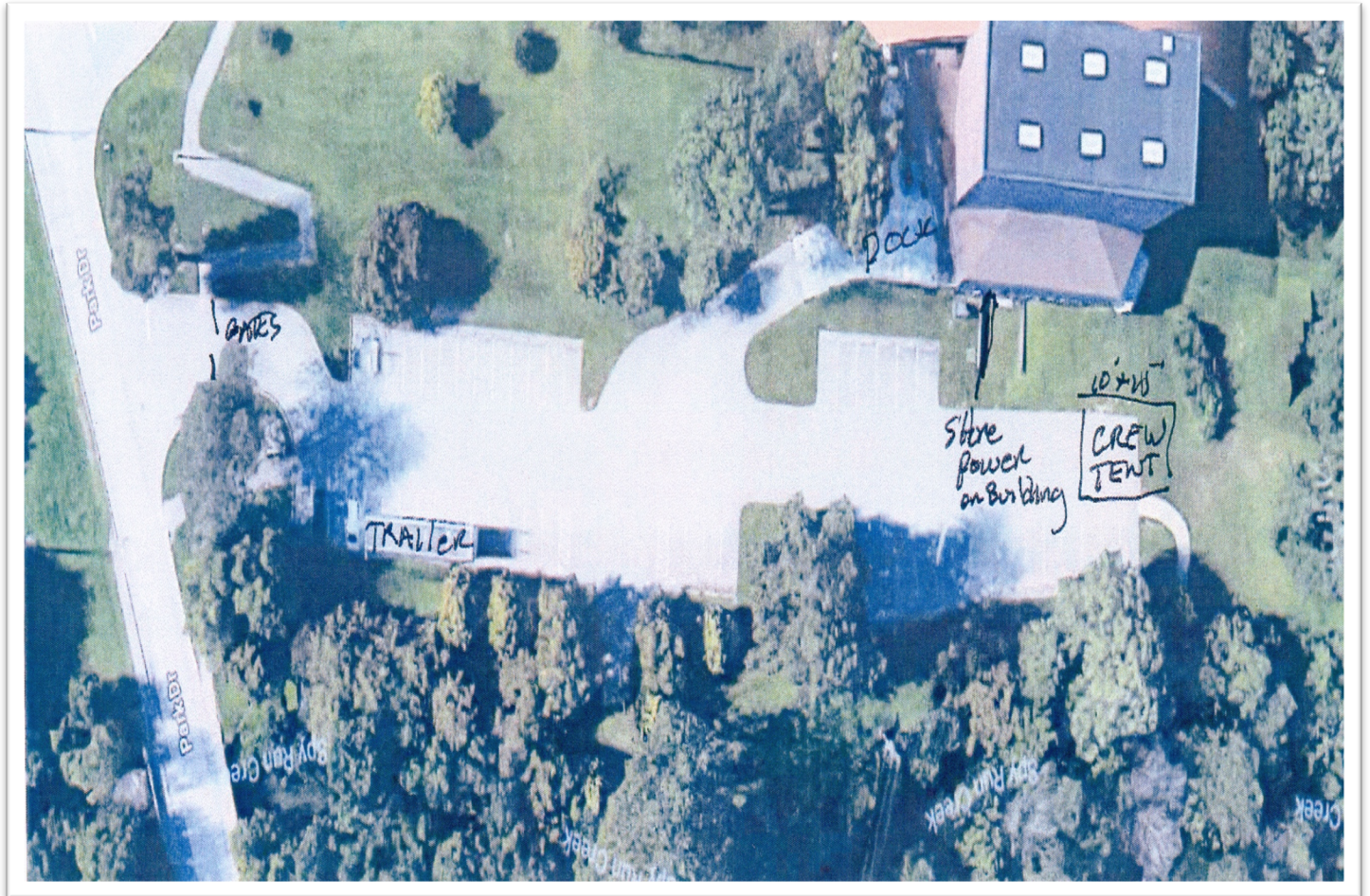
Take I-69 to Exit 309A; Follow toward Pilot Travel Center direction and turn left onto W. Coliseum Blvd.; take a right onto Sherman Blvd.; follow to Franke Park Dr. and turn right. You will see a Fort Wayne Zoo sign on your left and Foellinger Theatre will be next to it. Refer to pictures for bus parking and dock location.



Loading Dock

Loading Door: 9'x11'

Our loading dock is a single dock setup with overhead door and dock plate. There is a 12,000-pound max scissor lift that will raise and lower if needed. Loading dock is immediately adjacent to upstage left. Lift platform dimensions are 8'x12'.



Transportation Services

Runners can be available for an additional fee. Please schedule any production runner requirements no less than two weeks in advance of your performance date.

Theatre Seating Capacity

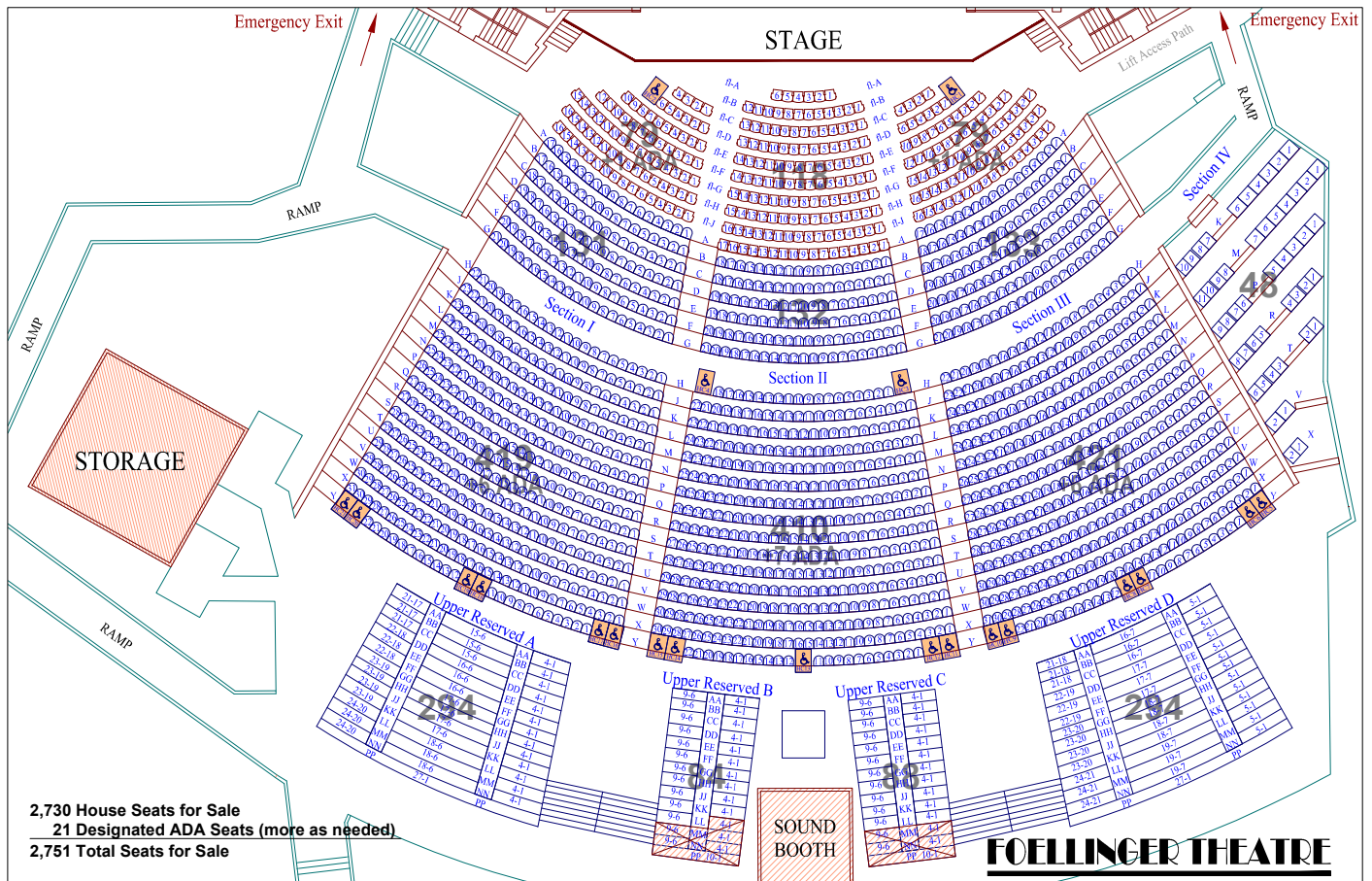
Seating Capacity 2,751

Main Floor

Section 1:	629
Section 2:	660
Section 3:	633
Section 4:	48
Handicapped:	21
Total Seats:	1,991

Bleachers

Bleachers A:	294
Bleachers B:	84
Bleachers C:	88
Bleachers D:	294
Handicapped:	0
Total Seats:	760



RF hearing impaired belt packs are available for patrons in need through the Box Office.

Theatre-Related Facilities

Production Office (16x24)

A road company production office is located downstairs next to the catering and dressing rooms. Direct phone/fax line(s) are available with advance request.

Dressing Rooms (9 Total)

Dressing Room 1 (9x16)

Capacity: 2-4

Includes: sink, mirror, counter, 2 clothing racks, 2 padded chairs, 1 chair

Dressing Room 2 (9x16)

Capacity: 2-4

Includes: sink, mirror, counter, 2 clothing racks, 1 chair, 1 twin padded chair

Dressing Room 3 (8x9)

Capacity: 2

Includes: sink, mirror, counter, 2 clothing racks, 1 chair, 1 padded chair

Dressing Room 4 (8x9)

Capacity: 2

Includes: sink, mirror, counter, 2 clothing racks, 1 chair, 1 padded chair

Dressing Room 5 (8x9)

Capacity: 2

Includes: sink, mirror, counter, 2 clothing racks, 1 chair, 1 padded chair

Dressing Room 6 (9x9)

Capacity: 2

Includes: sink, mirror, counter, 2 clothing racks, 1 chair, 1 padded chair

Dressing Room 7 (9x9)

Capacity: 2

Includes: sink, mirror, counter, 2 clothing racks, 1 chair, 1 padded chair

Dressing Room 8 (Onstage) (9x10)

Capacity: 2-3

Includes: sink, mirror, counter, 1 clothing rack, 3 chairs

Dressing Room 9 (Onstage) (9x10)

Capacity: 2-3

Includes: sink, mirror, counter, 1 clothing rack, 3 chairs

****NOTE A Rowenta 1500-watt steamer and ironing board are available

Private Lounge (17x22)

A fully furnished lounge that seats seven.

Includes: sink, counter, refrigerator, 7 chairs, and a microwave

On Deck Catering Room (13x17)

A large room complete with a countertop, cabinetry, and a refrigerator, and 7 chairs

Main Catering Room

Seats 30 guests and boasts a nice sitting area for relaxation with multiple TVs displaying stage deck.

Restrooms

A total of four restrooms are available. One Men's room downstairs SL complete with shower, one Women's room downstairs SR complete with shower, and two Unisex restrooms upstage-stage right.

Showers

Two showers are available downstairs. 1 shower is facilitated in the Men's restroom, and 1 shower is facilitated in the Women's restroom.

Company Power

Lighting

1 208v wye, 3-phase, 5-wire, 400 amps per leg with camlok termination utilizing reverse neutral and ground located downstage-stage right. House does have neutral and ground turnarounds if needed.

Audio

1 208v wye 3-phase, 5-wire, 200 amps per leg with camlok termination utilizing reverse neutral and ground located downstage-stage left. House does have neutral and ground turnarounds if needed.

General

1 208v wye 3-phase, 5-wire, 100 amps per leg with camlok termination utilizing reverse neutral and ground located upstage-stage right. House does have neutral and ground turnarounds if needed.

Shore Power

2 50-amp services are available in the lower parking lot just behind the dock next to catering on the theatre tower. Each box contains a Nema 14-50 50A-125/250V receptacle, a Nema 10-50 50A 125/250V receptacle, and a 20-amp GFCI duplex receptacle. Busses and trucks must provide their own feeder cable to get to the boxes and proper connector using one of the listed above.

**All of the services listed above are sharing a common transformer coming into the building.

Stage Floor

- Non-glossy black
- No trap room, floor is not trapped.
- Basic stage size is 97x53 including usable wings on left and right.
- 8' crossover behind Upstage cyc drop
- Offstage-stage left wing stairway leading to downstairs dressing rooms and men's restroom and shower.
- Offstage-stage right wing stairway leading to downstairs dressing rooms and women's restroom and shower.
- A handicap elevator downstage-stage left is available for transport with a 750lb capacity.
- There is **no** fire pocket.
- There are two intercom positions onstage. Each intercom position has a handset and a 2-channel headset station. If preferred, a headset can be used at these positions instead of a handset. Both stations are located in the downstage-stage left wing and downstage-stage right wing

At this time, there is NOT an in-house forklift or stacking motor available.

Stage Equipment

1 Yamaha Clavinova Piano

110 folding chairs
13 Stage Right all-purpose double sided reversible all-purpose stage decks
7 Stage Right Z800 16-inch reconfigurable stage supports
6 Stage Right Z800 8-inch reconfigurable stage supports
2 Stage Right 8-inch single steps (no railing)
3 Stage Right 8ft long chair stops.
***Available riser heights are 8", 12", 16", and 24"

Video Projection/Distribution System

1 Samsung DD-H6500 Blue-Ray player
1 Decimator MD-HX HDMI/SDI cross converter with scaling and frame rate conversion.

Sound Inventory

NOTE: For more demanding events, auxiliary audio gear can be added, supplemented, for an additional fee.
NOTE: The theatre is capable of providing an onstage monitor world ONLY if an advance discussion is held with the Theatre Production Lead.

FOH Mix Position (In Control Booth)

1 Yamaha M3000 40 channel + 4 stereo channels
16 aux, mixing console

Auxiliary Console

1 Behringer X32 32 channel mixing console
1 Behringer S32 stage rack

Outboard Processing

1 Presonus ACP88 compressor/gates
4 DBX1066 compressor/gates
3 Alesis Nanocomps
2 DBX2231 (for use on monitors when mixing monitors from FOH)
2 Rane PE17 parametric equalizers inserted on main left and right busses for system tuning

Effects

2 Yamaha SPX2000
2 TC Electronics D-TWO
1 Alesis Nanoverb

Playback Devices

1 Denon 770R dual cassette deck
1 Denon 650F CD player
1 Yamaha C200 dual cassette deck
1 Tascam CD201 studio professional grade CD player

Control Booth Reference Cabinets/Processing

2 Mackie HR824 active studio monitors
2 Yamaha S112 PH studio/stage monitor or main cabinets
2 Sabine SDA102 delay modules for reference delays

Theatre Speakers and Amplifiers

2 Main Arrays of 10 JBL VTX V25 Loudspeakers
1 Outfill Hang of 4 JBL VRX932 Loudspeakers
1 Centerfill Hang of 3 JBL VRX932 Loudspeakers
10 JBL VTX S28 Dual 18" Subwoofer Enclosures
4 JBL VRX932 Front Fill Enclosures

Mains, Subs, and Fills Powered by:

24 Crown ITECH12000HD Amplifiers

Theatre On-Stage Monitor System

(Complete 10-Mix, 10-Wedge, passive monitor system)

1 Yamaha GA32/12 32 channel 12-mix monitor mixing console
5 DBX 2231 (10 mixes)
4 JBL MRX512M 12x2" monitor enclosures
6 JBL MR905 15x2" monitor enclosures
6 Toa Systems SM75 2-way powered small stage monitor enclosures (2 5" full range cones) all complete with yokes.
2 Yamaha S4 15x2" loudspeaker enclosures as auxiliary cabinets or side fill

5 Crown K1 amplifiers

2 Crown K2 amplifiers

Intercom System

1 Production Intercom MS200 2 channel main station
2 Production Intercom SMH210 single muff headsets
4 Production Intercom DMH220 dual muff headsets
2 Pro Intercom SMH310 single muff headsets
8 Production Intercom BP1S/L 2 channel beltpacks
2 Pro Intercom BP1 single channel beltpack
2 Clear Com CC75 single muff headset
2 Clear Com CC40 single muff headset
2 Production Intercom HH10 handsets
2 Production Intercom HS-1 2-channel headset stations

Auxiliary Equipment

1 Shure FP33 3 channel 2 output field mixer
1 Shure M68 5 channel 1 output mixer
1 Shure FP16A 1 channel 6 output mixer
1 Goldline PN2 pink noise generator
1 Goldline DSP30 30-band portable RTA

Microphones & Accessories

4 Countryman Type-85 active direct boxes
2 Isomaxx DM2-2XX stereo line output isolator 1 to 1 ratio XLR in/out
2 Isomaxx PI2XX stereo audio isolator interface box
2 Barcus Berry Model 4000 piano planer wave systems
4 Crown PZM-6S boundary microphones
4 Crown PZM A1590 pressure zone microphones
5 Crown PCC160 prof boundary layer microphones
1 Shure WH30 headset microphone
10 Shure SM48 microphones
6 Shure SM57 microphones
6 Shure SM58 microphones
6 Shure SM81 microphones
4 Shure SM87A microphones
2 Shure Beta 52 microphones
1 Shure Beta 91 microphone
7 Electro Voice RE15 microphones
3 Electro Voice DO54 microphones
1 Audix D6 microphone
1 Audix I5 microphone

6 Blue Encore 100 Series microphones
4 ProCo DB1 passive direct box
2 ProCo MS2 1 In/2 out splitter
4 ProCo MS3 1 In/3 out splitter
2 ProCo IT1 single channel isolation boxes
1 ART DTI dual transformer isolation box
2 AKG D112 microphones
8 Audio Technica AT8533 choir microphones
2 AKG GN30E 12" gooseneck microphones
6 Sennheiser E604 microphones
3 EWI FDB202 stereo direct boxes
1 Radial Stereo JDI duplex MK4 dual direct box

Wireless

2 Shure UR4D complete with 4 UR2/Beta87C and 4 UR1 beltpacks
2 Shure ULXP4 complete with 2 ULX2/SM58 and 2 ULX1 beltpacks
2 Shure SC4 Marcad Diversity wireless
1 WA405 Marcad Diversity antenna distribution

NOTE: A wide variety of mic stands complete with boom arms, cabling, and sub snakes are available

Lighting Inventory/Electrics Overview

Lighting Console

1 ETC Element 40 console

Dimmers

192 channels of Strand CD80 2.4K dimmer modules

24 channels of ETC Sensor 2.4K dimmer modules

1 Leprecon LD360 6-channel 2.4K satellite dimmer

Control Booth Reference System

2 Mackie HR824 reference speakers

1 Alesis Nanocomp

Fixture Inventory

120 ETC Source 4 pars lamped at 750 watts

30 ETC Source 4 19° ERS lamped at 750 watts

8 ETC Source 4 12-cell multi-pars lamped at 750 watts

5 Pro Can 6-light par 64 1,000-watt bars

3 Pro Can 8-light Molefey fixtures

2 American DJ Megabars

Atmosphere

2 High End DF50 hazers

Intercom System (shared between departments)

1 Production Intercom MS200 2 channel main station

2 Production Intercom SMH210 single muff headsets

4 Production Intercom DMH220 dual muff headsets

2 Pro Intercom SMH310 single muff headsets

8 Production Intercom BP1S/L 2 channel beltpacks

2 Pro Intercom BP1 single channel beltpack

2 Clear Com CC75 single muff headset

2 Clear Com CC40 single muff headset

2 Production Intercom HH10 handsets

2 Production Intercom HS-1 2-channel headset stations

Hang Positions

- Catwalk 1: Approximately 40' high from stage level, immediately DS of proscenium arch; 20 circuits*. Best positions for front-lighting all areas of the stage.
- Catwalk 2: Approximately 40' high from stage level, DS of Catwalk 1 with a 54' approximate throw distance to plaster line; 6 circuits*. This catwalk though usually is not flown on or used.

Stage

- 7 dimmable floor pockets 3 US (L/C/R) flush to upstage wall. 2 MSL, and 2 MSR. Each box contains 4 circuits for a total of 28 circuits.
- 2 side pipes (SL/SR mounted to proscenium opening). Each side pipe has 12 circuits.
- Electric 1: 4' upstage of plaster line; 24 circuits*
- Electric 2: 11'2" upstage of plaster line; 18 circuits*
- Electric 3: 17'11" upstage of plaster line; 18 circuits*
- Electric 4: 22' 7" upstage of plaster line; 18 circuits*
- Electric 5: 28'5" upstage of plaster line; 21 circuits*

*Circuits subject to availability. A circuit chart is included.

Lighting Standard Configuration

The theatre standard purchase plot generally includes the following lighting (See plot in Appendix A)

1st & 2nd Electrics (Each)

30 ETC S4 750-watt MFL pars (3 washes, 10 lights)

3rd & 4th Electrics (Each)

30 ETC S4 750-watt NSP pars (3 washes, 10 lights)

5th Electric (Cyc Electric)

4 ETC S4 12-cell 750-watt MFL pars (4 washes, 12 lights)

1st Catwalk

30 ETC S4 Leiko 19° 750-watt (two-fer'd and can be used for washes and/or specials)

NOTES

We have a generously stocked gel cabinet with Rosco, Lee, and Apollo gel. We do not charge for gel we already stock under normal circumstances. Please provide a color-cut list at your advance meeting to determine if you must order additional sheets of color.

Followspots & Locations

We have four followspot locations (house left, house center left & house center right, and house right). The two next to the FOH control booth are booths whereas the far house left and far house right are platforms. Each location has a Phoebus Imarc 850 followspot and a wired intercom beltpack and headset.

4 Phoebus Imarc 850 followspots

Throw distances:

128' - Front edge of stage at stage level

140' - Plaster line

172' - Upstage

Rigging System Overview

- Complete fly system providing 14 usable double purchase counter-weighted lines. The pipes are 1 ½" in diameter with a length of 72' and a travel range of 55' 8" up/down. At the lowest position, the pipe hang is 4' 2" above the deck.
- All lines are controlled from the stage right locking rail on the second level
- The loading gallery is located approximately 48' above stage level. And has approximately 19,450 lbs. of available arbor weights.

- Arbors can hold approximately 1,500lbs.
- Additionally, there are two side galleries stage right and stage left (pin rails) located 19’ above stage level.
- There are five dedicated electrics on linesets 2,3,8,10, and 12). See lighting section for more information.
- One dedicated two-way radio is available for the flyrail operator.
- Arbor weight: “Fourth” brick = 15 lbs., “Third” brick = 20 lbs., “Half” brick = 25 lbs., “Full” brick = 40 lbs., “Double” brick = 60 lbs.

Fly Loft Grid

Our fly grid 62’ high and features C3x5 channels spanning North-South at 6” on center. The channels are installed toe down forming a walkable surface. The C3 channels are supported by S6x12.5 beams spanning East-West at 5’ on center. The S6 beams span a distance of 13’ and are supported on the ends by C10x15.3 channels. The C10 channels are supported by 10”x4” steel tubes at 5’ on center.

Load Limits

Uniform Distribution	100lbs sq. ft. (Total 240,000 lbs.)
Concentrated Point Load	500lbs sq. ft. (with 4’ schedule 80 pipe between purlins) or 250lbs sq. ft. on a single purlin.

NOTE: Concentrated loads should NOT be combined with uniform loads on either grid.

FOH Fly Truss

We have a DS truss that serves as rigging points for an additional lighting truss, rented FOH loudspeaker cabinets, and house loudspeaker cabinets. Truss spans 70’ across apron downstage of the proscenium.

A maximum of 5,000 lbs. can be located at one lifting location but may not exceed the total of 12,000 lbs. for the entire truss load limit.

NOTE: Concentrated loads should NOT be combined with uniform loads on either grid.

Softgoods

- 1 Grand Curtain (Ruby in color) that does not fly out. The Grand Curtain travels open from center. The traveler is two sections that are 28x40. The operation of the main curtain traveler is located off stage right.
- 1 Grand Border (Ruby in color) that flies in front of the Grand Curtain and is 12ft tall.

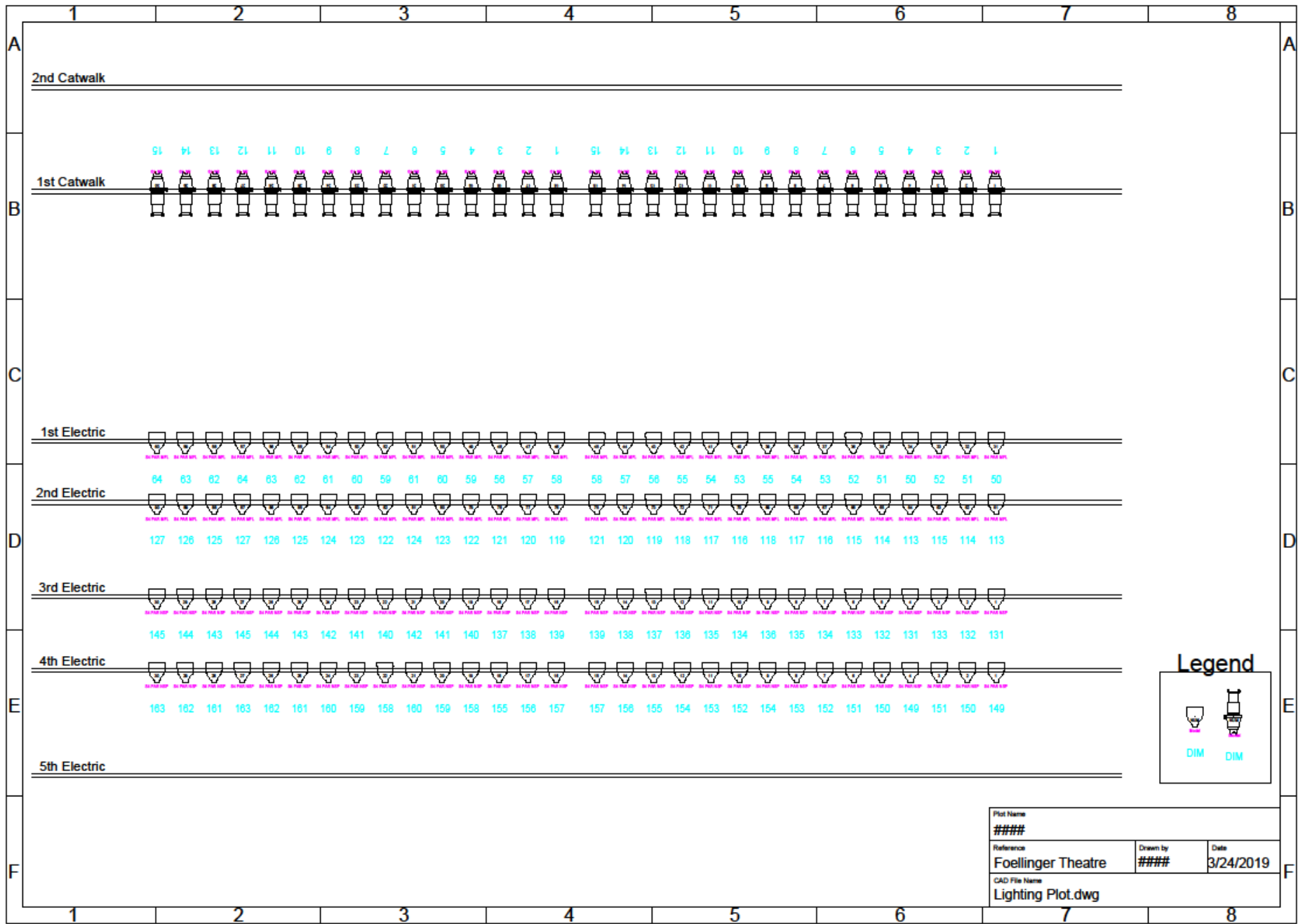
- 5 pairs of legs, and 5 full-length border maskings black in, all of which are pleated 21oz black Encore imitation velour 28' tall.
- 2 cyclorama filled scrims (one light blue, one white). Both cycloramas are 28x71
- 1 21oz black Encore imitation velour mid-stage traveler that opens from center.
- 1 21oz black Encore imitation velour upstage traveler that can fly out or open from the center.
- The travelers cannot be moved to other linesets.
- Legs are on tracks which are freely adjustable on/off stage.
- All travelers are controlled from the stage-right side.

Lineset Schedule

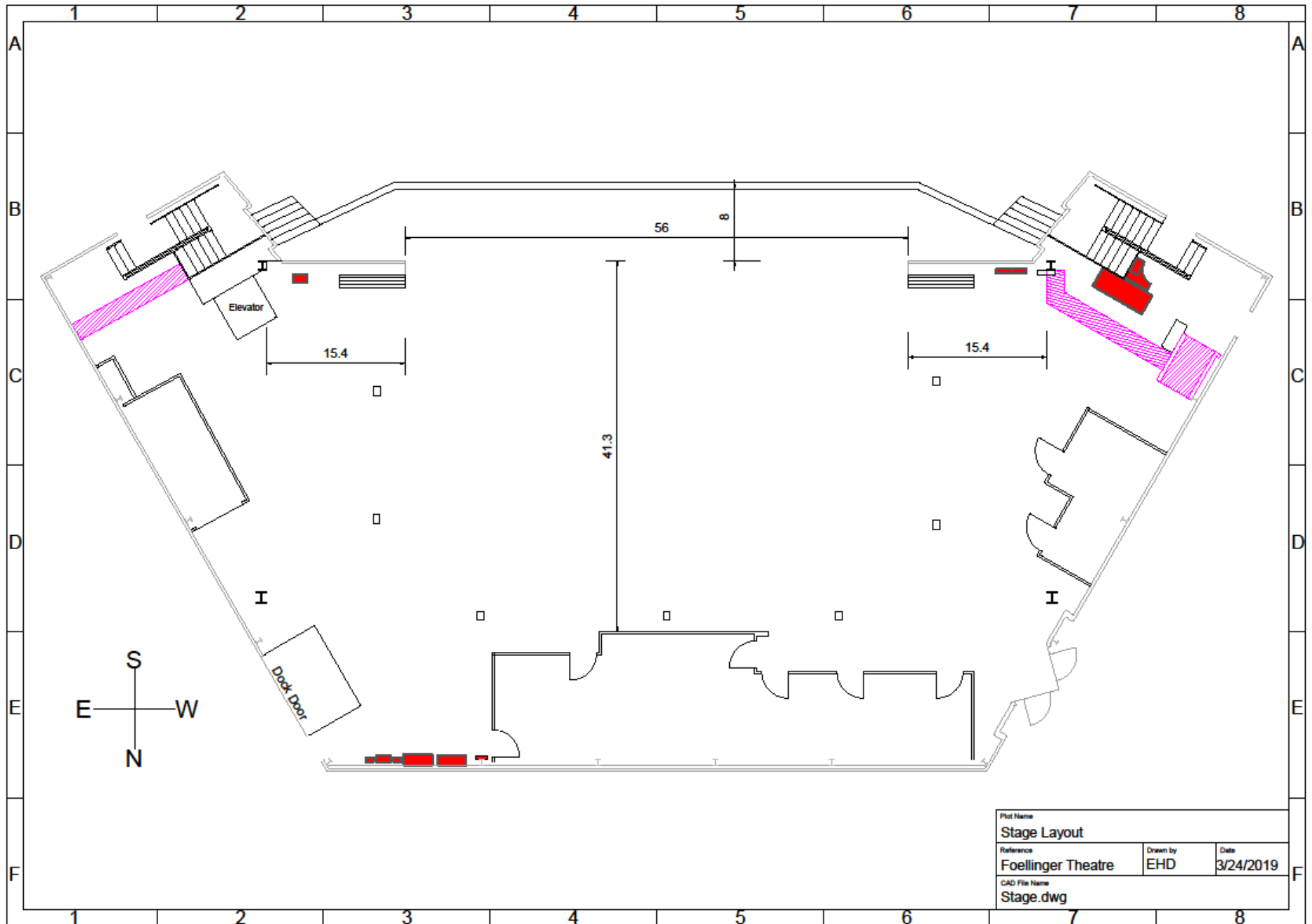
This is a general listing of our fly system's current configuration. If you will be extensively using or changing the rigging system, please use the Lineset Schedule for reference provided in the Appendices of this packet **NOT THIS**. It has measurements and more accurate descriptions of our current configuration. If it was not included in your technical package, please contact the Theatre Production Lead with number found in contacts section above to obtain and discuss further.

Lineset	Lineset Description
	Grand Drape (Static)
1	Grand Border
2	1 st Electric
3	Unused
4	Black Border
5	2 nd Electric
	Mid black traveler (Static)
6	Projection Screen
7	Border
8	3 rd Electric
9	Black Border
10	4 th Electric
11	Black Border with Flag Sub Pipe
12	5 th Electric
13	Black Traveler
14	Cyclorama

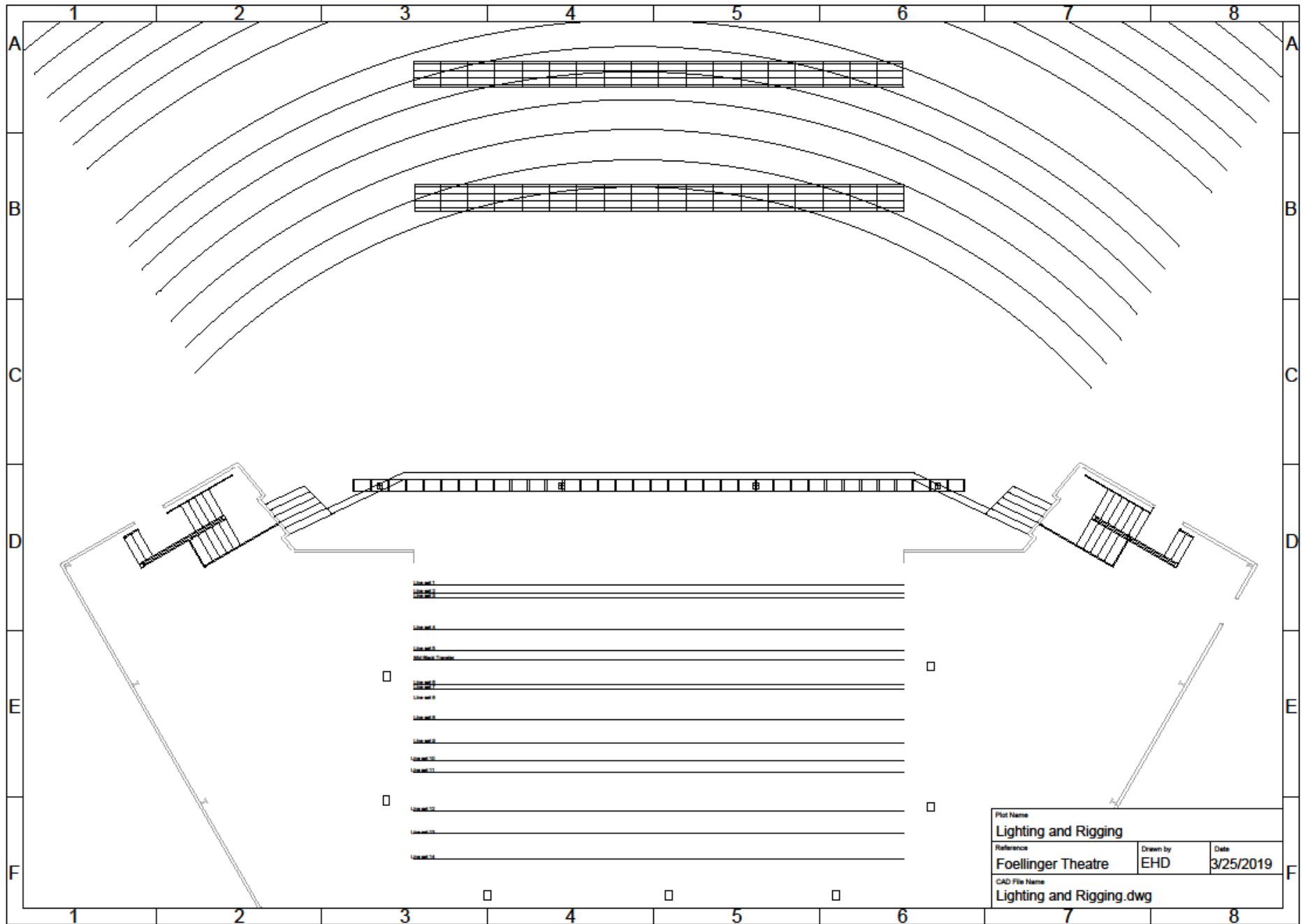
Appendix A: Diagrams and Drawings

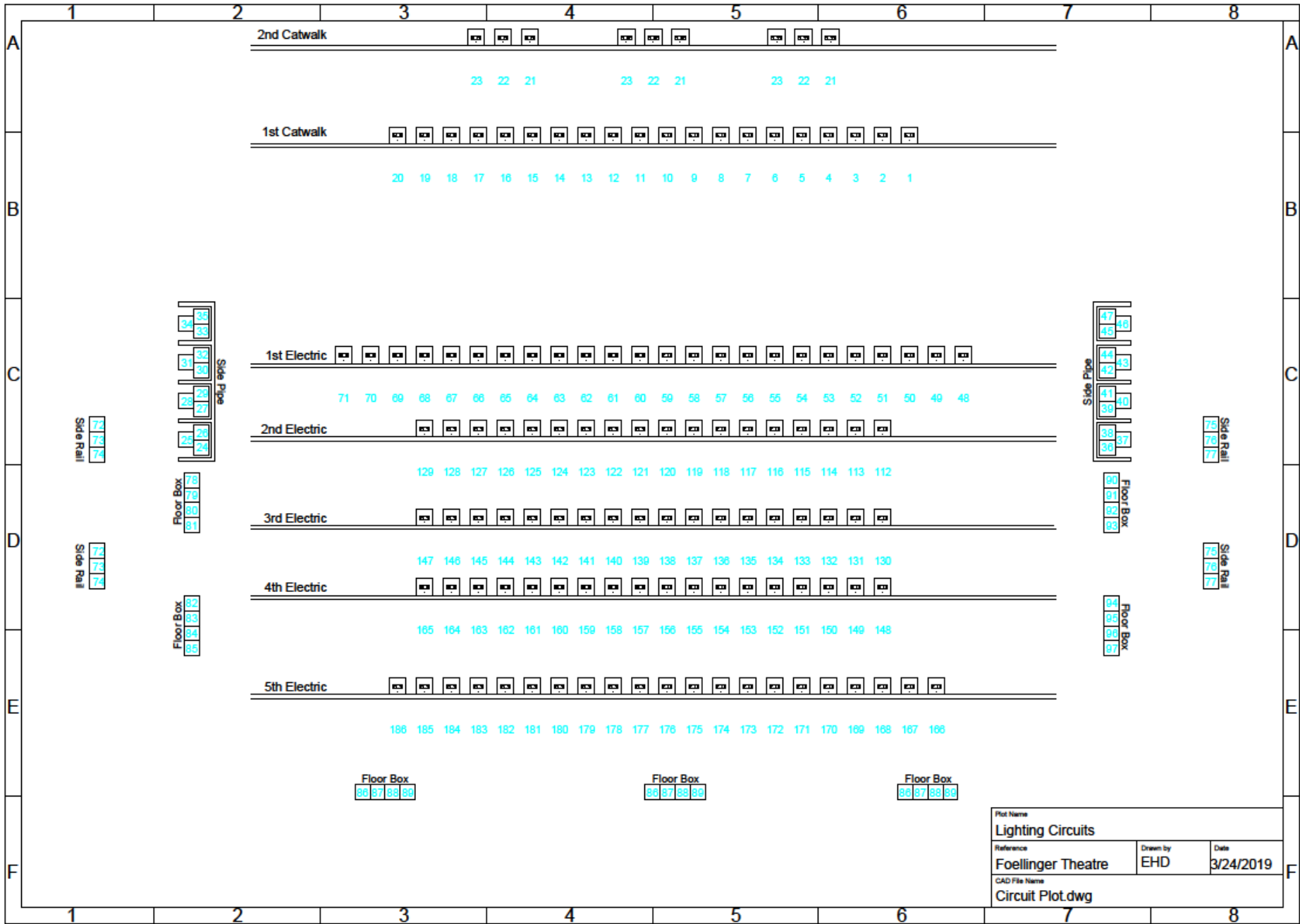


Plot Name		
####		
Reference	Drawn by	Date
Foellinger Theatre	####	3/24/2019
CAD File Name		
Lighting Plot.dwg		



Plot Name Stage Layout		
Reference Foellinger Theatre	Drawn by EHD	Date 3/24/2019
CAD File Name Stage.dwg		





Plot Name Lighting Circuits		
Reference Foellinger Theatre	Drawn by EHD	Date 3/24/2019
CAD File Name Circuit Plot.dwg		

Appendix A: Foellinger Theatre Catwalk Instrument Schedule

<i>POSITION</i> <u>CATWALK</u>	<i>UNIT #</i>	<i>INST TYPE</i>	<i>LENSE</i>	<i>WATTAGE</i>	<i>COLOR</i>	<i>CHANNEL</i>	<i>DIMMER</i>
1	1	S4 LEIKO	19°	750W			1
2	2	S4 LEIKO	19°	750W			2
3	3	S4 LEIKO	19°	750W			3
4	4	S4 LEIKO	19°	750W			4
5	5	S4 LEIKO	19°	750W			5
6	6	S4 LEIKO	19°	750W			6
7	7	S4 LEIKO	19°	750W			7
8	8	S4 LEIKO	19°	750W			8
9	9	S4 LEIKO	19°	750W			9
10	10	S4 LEIKO	19°	750W			10
11	11	S4 LEIKO	19°	750W			11
12	12	S4 LEIKO	19°	750W			12
13	13	S4 LEIKO	19°	750W			13
14	14	S4 LEIKO	19°	750W			14
15	15	S4 LEIKO	19°	750W			15
16	16	S4 LEIKO	19°	750W			1
17	17	S4 LEIKO	19°	750W			2
18	18	S4 LEIKO	19°	750W			3
19	19	S4 LEIKO	19°	750W			4
20	20	S4 LEIKO	19°	750W			5
21	21	S4 LEIKO	19°	750W			6
22	22	S4 LEIKO	19°	750W			7
23	23	S4 LEIKO	19°	750W			8
24	24	S4 LEIKO	19°	750W			9
25	25	S4 LEIKO	19°	750W			10
26	26	S4 LEIKO	19°	750W			11
27	27	S4 LEIKO	19°	750W			12
28	28	S4 LEIKO	19°	750W			13
29	29	S4 LEIKO	19°	750W			14
30	30	S4 LEIKO	19°	750W			15

Appendix A: Foellinger Theatre First Electric Instrument Schedule

<i>POSITION</i>	<i>UNIT #</i>	<i>INST TYPE</i>	<i>LENSE</i>	<i>WATTAGE</i>	<i>COLOR</i>	<i>CHANNEL</i>	<i>DIMMER</i>
<u>FIRST ELECTRIC</u>							
1	31	S4 PAR	MFL	750W			50
2	32	S4 PAR	MFL	750W			51
3	33	S4 PAR	MFL	750W			52
4	34	S4 PAR	MFL	750W			50
5	35	S4 PAR	MFL	750W			51
6	36	S4 PAR	MFL	750W			52
7	37	S4 PAR	MFL	750W			53
8	38	S4 PAR	MFL	750W			54
9	39	S4 PAR	MFL	750W			55
10	40	S4 PAR	MFL	750W			53
11	41	S4 PAR	MFL	750W			54
12	42	S4 PAR	MFL	750W			55
13	43	S4 PAR	MFL	750W			56
14	44	S4 PAR	MFL	750W			57
15	45	S4 PAR	MFL	750W			58
16	46	S4 PAR	MFL	750W			58
17	47	S4 PAR	MFL	750W			57
18	48	S4 PAR	MFL	750W			56
19	49	S4 PAR	MFL	750W			59
20	50	S4 PAR	MFL	750W			60
21	51	S4 PAR	MFL	750W			61
22	52	S4 PAR	MFL	750W			59
23	53	S4 PAR	MFL	750W			60
24	54	S4 PAR	MFL	750W			61
25	55	S4 PAR	MFL	750W			62
26	56	S4 PAR	MFL	750W			63
27	57	S4 PAR	MFL	750W			64
28	58	S4 PAR	MFL	750W			62
29	59	S4 PAR	MFL	750W			63
30	60	S4 PAR	MFL	750W			64

Appendix A: Foellinger Theatre Second Electric Instrument Schedule

<i>POSITION</i>	<i>UNIT #</i>	<i>INST TYPE</i>	<i>LENSE</i>	<i>WATTAGE</i>	<i>COLOR</i>	<i>CHANNEL</i>	<i>DIMMER</i>
<u>SECOND ELECTRIC</u>							
1	61	S4 PAR	MFL	750W			113
2	62	S4 PAR	MFL	750W			114
3	63	S4 PAR	MFL	750W			115
4	64	S4 PAR	MFL	750W			113
5	65	S4 PAR	MFL	750W			114
6	66	S4 PAR	MFL	750W			115
7	67	S4 PAR	MFL	750W			116
8	68	S4 PAR	MFL	750W			117
9	69	S4 PAR	MFL	750W			118
10	70	S4 PAR	MFL	750W			116
11	71	S4 PAR	MFL	750W			117
12	72	S4 PAR	MFL	750W			118
13	73	S4 PAR	MFL	750W			119
14	74	S4 PAR	MFL	750W			120
15	75	S4 PAR	MFL	750W			121
16	76	S4 PAR	MFL	750W			119
17	77	S4 PAR	MFL	750W			120
18	78	S4 PAR	MFL	750W			121
19	79	S4 PAR	MFL	750W			122
20	80	S4 PAR	MFL	750W			123
21	81	S4 PAR	MFL	750W			124
22	82	S4 PAR	MFL	750W			122
23	83	S4 PAR	MFL	750W			123
24	84	S4 PAR	MFL	750W			124
25	85	S4 PAR	MFL	750W			125
26	86	S4 PAR	MFL	750W			126
27	87	S4 PAR	MFL	750W			127
28	88	S4 PAR	MFL	750W			125
29	89	S4 PAR	MFL	750W			126
30	90	S4 PAR	MFL	750W			127

Appendix A: Foellinger Theatre Third Electric Instrument Schedule

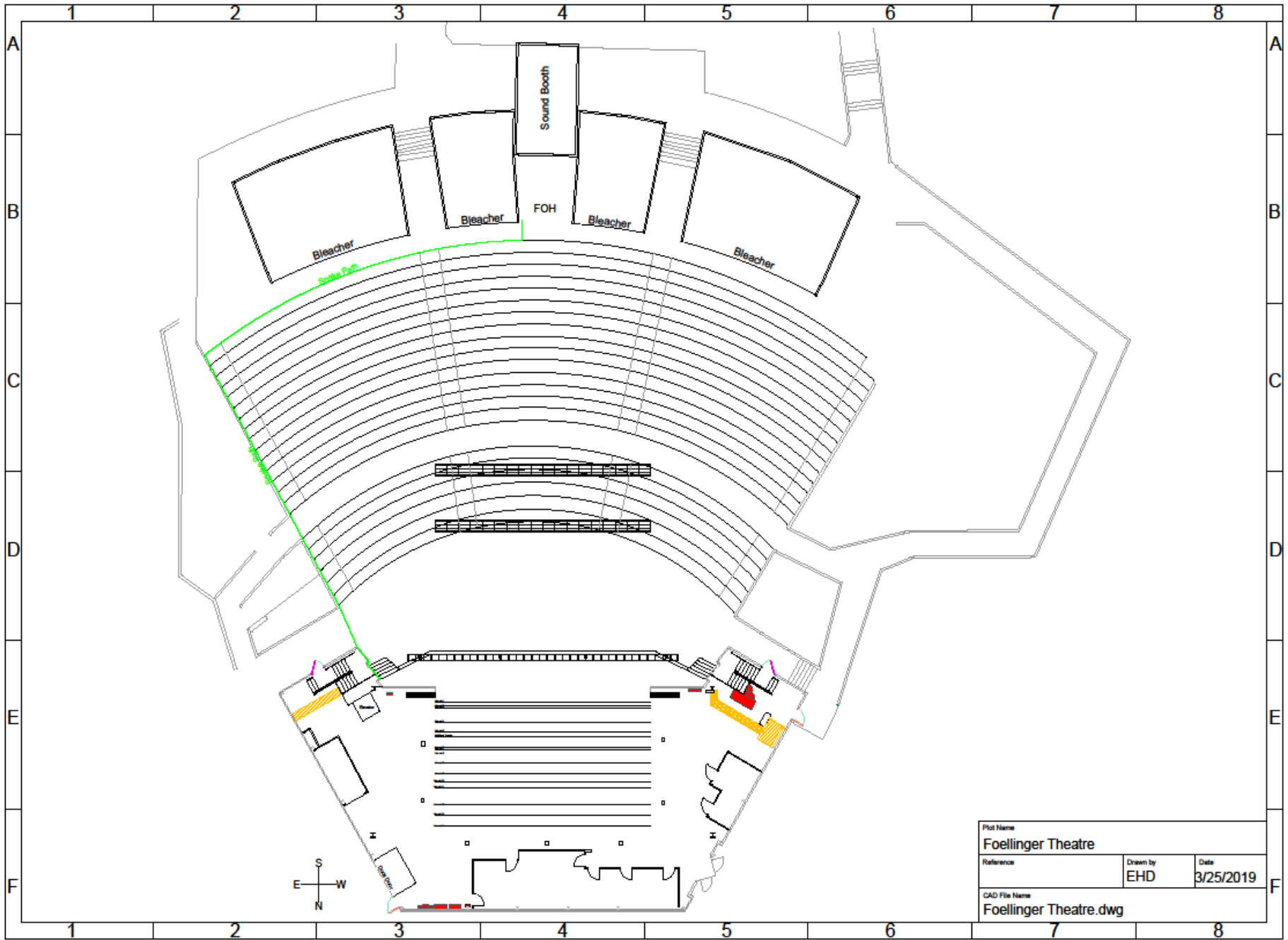
<i>POSITION</i>	<i>UNIT #</i>	<i>INST TYPE</i>	<i>LENSE</i>	<i>WATTAGE</i>	<i>COLOR</i>	<i>CHANNEL</i>	<i>DIMMER</i>
<u>THIRD ELECTRIC</u>							
1	91	S4 PAR	NSP	750W			131
2	92	S4 PAR	NSP	750W			132
3	93	S4 PAR	NSP	750W			133
4	94	S4 PAR	NSP	750W			131
5	95	S4 PAR	NSP	750W			132
6	96	S4 PAR	NSP	750W			133
7	97	S4 PAR	NSP	750W			134
8	98	S4 PAR	NSP	750W			135
9	99	S4 PAR	NSP	750W			136
10	100	S4 PAR	NSP	750W			134
11	101	S4 PAR	NSP	750W			135
12	102	S4 PAR	NSP	750W			136
13	103	S4 PAR	NSP	750W			137
14	104	S4 PAR	NSP	750W			138
15	105	S4 PAR	NSP	750W			139
16	106	S4 PAR	NSP	750W			139
17	107	S4 PAR	NSP	750W			138
18	108	S4 PAR	NSP	750W			137
19	109	S4 PAR	NSP	750W			140
20	110	S4 PAR	NSP	750W			141
21	111	S4 PAR	NSP	750W			142
22	112	S4 PAR	NSP	750W			140
23	113	S4 PAR	NSP	750W			141
24	114	S4 PAR	NSP	750W			142
25	115	S4 PAR	NSP	750W			143
26	116	S4 PAR	NSP	750W			144
27	117	S4 PAR	NSP	750W			145
28	118	S4 PAR	NSP	750W			143
29	119	S4 PAR	NSP	750W			144
30	120	S4 PAR	NSP	750W			145

Appendix A: Foellinger Theatre Fourth Electric Instrument Schedule

<i>POSITION</i>	<i>UNIT #</i>	<i>INST TYPE</i>	<i>LENSE</i>	<i>WATTAGE</i>	<i>COLOR</i>	<i>CHANNEL</i>	<i>DIMMER</i>
<u>FOURTH ELECTRIC</u>							
1	121	S4 PAR	NSP	750W			149
2	122	S4 PAR	NSP	750W			150
3	123	S4 PAR	NSP	750W			151
4	124	S4 PAR	NSP	750W			149
5	125	S4 PAR	NSP	750W			150
6	126	S4 PAR	NSP	750W			151
7	127	S4 PAR	NSP	750W			152
8	128	S4 PAR	NSP	750W			153
9	129	S4 PAR	NSP	750W			154
10	130	S4 PAR	NSP	750W			152
11	131	S4 PAR	NSP	750W			153
12	132	S4 PAR	NSP	750W			154
13	133	S4 PAR	NSP	750W			155
14	134	S4 PAR	NSP	750W			156
15	135	S4 PAR	NSP	750W			157
16	136	S4 PAR	NSP	750W			157
17	137	S4 PAR	NSP	750W			156
18	138	S4 PAR	NSP	750W			155
19	139	S4 PAR	NSP	750W			158
20	140	S4 PAR	NSP	750W			159
21	141	S4 PAR	NSP	750W			160
22	142	S4 PAR	NSP	750W			158
23	143	S4 PAR	NSP	750W			159
24	144	S4 PAR	NSP	750W			160
25	145	S4 PAR	NSP	750W			161
26	146	S4 PAR	NSP	750W			162
27	147	S4 PAR	NSP	750W			163
28	148	S4 PAR	NSP	750W			161
29	149	S4 PAR	NSP	750W			162
30	150	S4 PAR	NSP	750W			163

Appendix A: Foellinger Theatre Fifth (Cyclorama) Electric Instrument Schedule (Page 1)

<i>POSITION</i>	<i>UNIT #</i>	<i>INST TYPE</i>	<i>LENSE</i>	<i>WATTAGE</i>	<i>COLOR</i>	<i>CHANNEL</i>	<i>DIMMER</i>
<u>FIFTH (CYCLORAMA)</u>							
<u>ELECTRIC</u>							
1	151-1		MFL	750W			168
1	151-2		MFL	750W			169
1	151-3		MFL	750W			170
1	151-4		MFL	750W			171
1	151-5		MFL	750W			168
1	151-6		MFL	750W			169
1	151-7		MFL	750W			170
1	151-8		MFL	750W			171
1	151-9		MFL	750W			168
1	151-10		MFL	750W			169
1	151-11		MFL	750W			170
1	151-12		MFL	750W			171
2	152-1		MFL	750W			172
2	152-2		MFL	750W			173
2	152-3		MFL	750W			174
2	152-4		MFL	750W			175
2	152-5		MFL	750W			172
2	152-6		MFL	750W			173
2	152-7		MFL	750W			174
2	152-8		MFL	750W			175
2	152-9		MFL	750W			172
2	152-10		MFL	750W			173
2	152-11		MFL	750W			174
2	152-12		MFL	750W			175
3	153-1		MFL	750W			176
3	153-2		MFL	750W			177
3	153-3		MFL	750W			178
3	153-4		MFL	750W			179
3	153-5		MFL	750W			176
3	153-6		MFL	750W			177
3	153-7		MFL	750W			178
3	153-8		MFL	750W			179
3	153-9		MFL	750W			176
3	153-10		MFL	750W			177
3	153-11		MFL	750W			178
3	153-12		MFL	750W			179



Plot Name		
Foellinger Theatre		
Reference	Drawn by	Date
	EHD	3/25/2019
CAD File Name		
Foellinger Theatre.dwg		

House Lineset Schedule
Foellinger Theatre

Lineset	Lineset Description	Distance from Plaster Line	Position	Trim Height	Empty Weight	House Loaded Weight	P/O/X	Notes	SHOW Lineset Use	Lineset	Dist
	Grand Drape	2'6"		28'			P	Ruby in color, Used as Maine Drape (2 pieces (28'x40'))			2'6"
1	Grand Border	3'6"			560lbs		P	Ruby in color Grand Border, 12' Tall		1	3'6"
2	1st Electric	4'		28'	1,460lbs	2,220lbs	P			2	4'
3	Open Pipe	7'8"					O			3	7'8"
4	Black Border	10'		28'	560lbs		P	Black Encore 21oz Imitation Velour		4	10'
5	2nd Electric	11'2"		28'	1,120lbs	1,760lbs	P			5	11'2"
	Mid Black Traveler	14'		28'			P	Black Encore 21oz Imitation Velour Opens from Center			14'
6	Projection Screen	14'5"			560lbs		P	19X25 Fastfold Screen with Front and Rear Projection Fabrics		6	14'5"
7	Black Border	15'8"		28'	600lbs		P	Black Encore 21oz Imitation Velour		7	15'8"
8	3rd Electric	17'11"		28'	1,120lbs	1800lbs	P			8	17'11"
9	Black Border	20'7"		28'	560lbs		P	Black Encore 21oz Imitation Velour		9	20'7"
10	4th Electric	22'7"		28'	1,000lbs	1,600lbs	P			10	22'7"
11	Black Border with Flag Sub Pipe	24'			560lbs		P	Black Encore 21oz Imitation Velour		11	24'
12	5th Electric (Cyc)	28'5"			1,120lbs		P			12	28'5"
13	Black Traveler	31'		28'	1,160lbs		P	Black Encore 21oz Imitation Velour Opens from Center or is able to fly out		13	31'
14	CYC	33'10"			560lbs		P	One of Two Cycloramas (Light Blue or White) (28x71)		14	33'10"